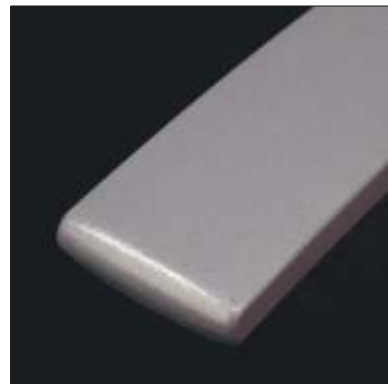


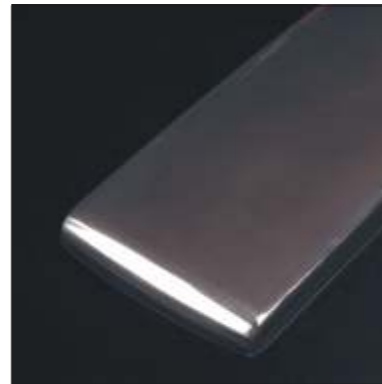
ALUMINIUM FINISHING



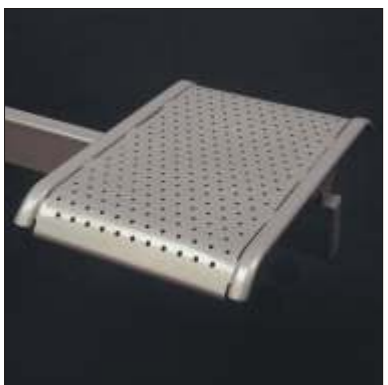
POWDER COATED TABLES



BRUSHED



POLISHED



STEEL



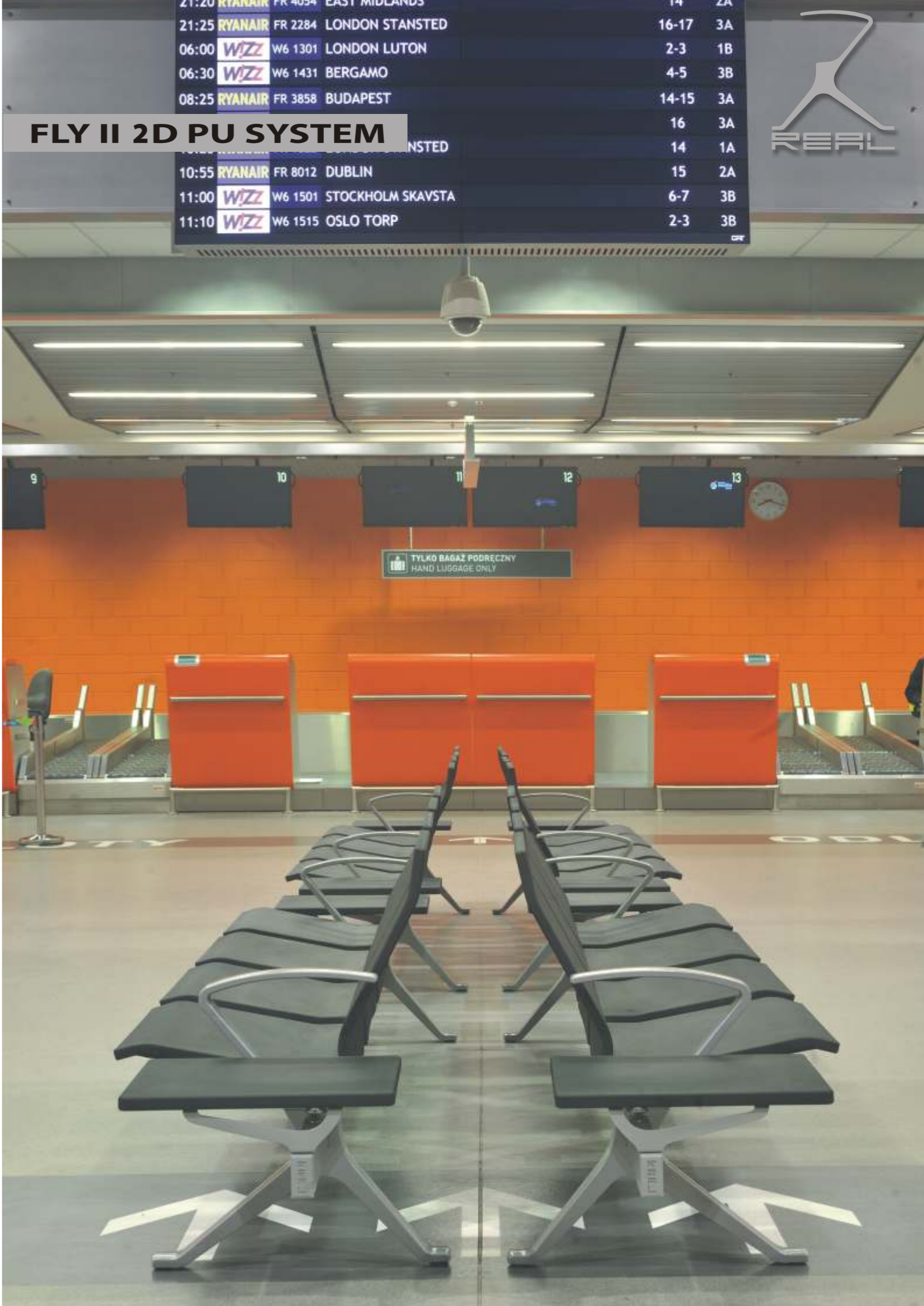
HPL OR BLACK PU



HPL WOOD

REAL works with ISO 9001: 2008 Quality Management System issued by TUV RHEINLAND. All our products are certified in terms of durability, stability, inflammability, hygiene and ergonomics. All seats have positive opinion for ergonomics from The Medical Institute.

We connect our seating with line and back-to-back connectors.





REAL



REAL

