

Flib

# Technical description

## 1. Conference tables

### 1.1. Table top

**Foldable table tops** - made of melamine faced chipboard (MFC), thickness 25 mm, class E1, with 2 mm edge in glue technology as standard, with the following shape options: rectangular, elliptic, half-elliptic, and half-oval.

### 1.2. Base

#### Mobile

Legs - made of steel tube Ø 32 mm equipped with handle bars with lock and unlock folding function of table top. Four Ø 65 mm castors, two equipped with brakes.

Beam - made of steel half-oval tube 50 × 25 mm, connected with legs.

Finish options: powder-coated in alu, white, black or chromium plated.

Fixed height 750 mm as standard.

#### Fixed

Legs - made of steel tube Ø 32 mm equipped with handle bars with lock and unlock folding function of table top. Four black plastic glides.

Beam - made of steel half-oval tube 50 × 25 mm, connected with legs.

Finish options: powder-coated in alu, white, black or chromium plated.

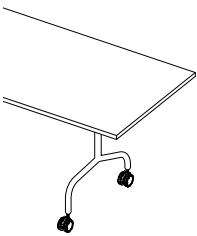
Fixed height 743 mm as standard.

To connect conference tables in order to make an arrangement, dedicated plastic connectors are required - to be ordered separately.

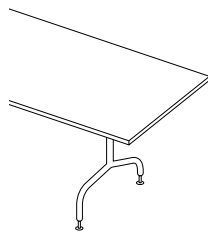
All tables are unassembled as standard.

## 1.3. Product range

### Bases

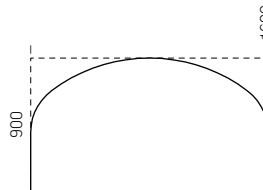
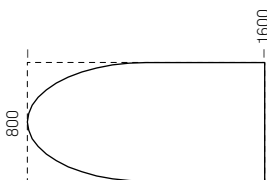
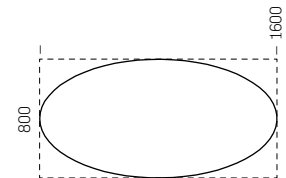
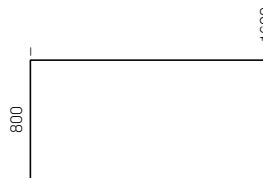


Mobile (M)



Fixed (F)

### Table tops



## 1.4. Sample order

Product code				Finish code	
Product line	Version	Table top shape and dimensions		Table top colour	Base colour
WSF	M	0	2	BI	CR

The following part of code **WSFM02-BICR** identifies product as:

Flib (**WSF**) mobile conference table (**M**), rectangular table top dimensions 1600 × 800 mm (**02**)

The following part of code **WSFM02-BICR** identifies product as:

Table top made of melamine faced chipboard (MFC) in white colour (**BI**), chromium plated base (**CR**)

ADJUSTMENT RANGE		
	MOBILE BASE	FIXED BASE
Fixed height	750 mm	743 mm

## 2. Linking units

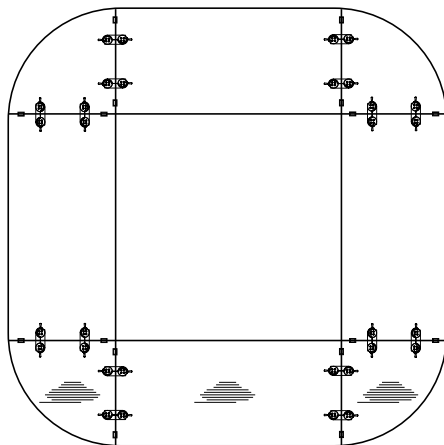
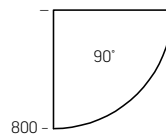
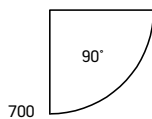
### 2.1. Table top

Fixed table tops - made of melamine faced chipboard (MFC), thickness 25 mm, class E1, with 2 mm edge in glue technology as standard, left and right version with the following shape - 90° (¼ circle).

Linking units are equipped with four steel chromium plated connectors as standard. To connect linking units with conference tables, dedicated plastic connectors are required - to be ordered separately.

### 2.3. Product range

#### Table tops



Left linking unit

Right linking unit

**Note:** in arrangements including linking units, special attention should be paid to direction of wood grains.

## 3. Plastic connectors

In order to link two table tops it is required to use:

- minimum 2 pieces of complete connectors (4 separate elements) in case of linking by table top depth,
- minimum 4 pieces of complete connectors (8 separate elements) in case of linking by table top width.

Connectors are used for linking table tops as well as linking units with table tops.

## 4. Table top finishes combinations

		TABLE TOP FINISH - MELAMINE FACED CHIPBOARD (MFC)									
		BI (G)	MB (4)	MP (P)	BZ (I)	CC (K)	MS (E)	NM (5)	NR (6)	NS (7)	
EDGE FINISH	GLUE TECHNOLOGY	BI (G)	<b>BI</b>	4G	PG	IG	KG	EG	5G	6G	7G
		MB (4)	G4	<b>MB</b>	P4	I4	K4	E4	54	64	74
		MP (P)	GP	4P	<b>MP</b>	IP	KP	EP	5P	6P	7P
		BZ (I)	GI	4I	PI	<b>BZ</b>	KI	EI	5I	6I	7I
		CC (K)	GK	4K	PK	IK	<b>CC</b>	EK	5K	6K	7K
		MS (E)	GE	4E	PE	IE	KE	<b>MS</b>	5E	6E	7E
		NM (5)	G5	45	P5	I5	K5	E5	<b>NM</b>	65	75
		NR (6)	G6	46	P6	I6	K6	E6	56	<b>NR</b>	76
		NS (7)	G7	47	P7	I7	K7	E7	57	67	<b>NS</b>
		NU (8)	G8	48	P8	I8	K8	E8	58	68	78
		NA (X)	GX	4X	PX	IX	KX	EX	5X	6X	7X
		NB (U)	GU	4U	PU	IU	KU	EU	5U	6U	7U
		NC (9)	G9	49	P9	I9	K9	E9	59	69	79
		NH (3)	G3	43	P3	I3	K3	E3	53	63	73
		NJ (2)	G2	42	P2	I2	K2	E2	52	62	72
		NL (0)	G0	40	P0	I0	K0	E0	50	60	70
		NT (R)	GR	4R	PR	IR	KR	ER	5R	6R	7R
		NV (W)	GW	4W	PW	IW	KW	EW	5W	6W	7W
NP (J)	GJ	4J	PJ	IJ	KJ	EJ	5J	6J	7J		
NZ(L)	GL	4L	PL	IL	KL	EL	5L	6L	7L		

The following code **GL** identifies table top colour as: melamine faced chipboard MFC in White colour BI (G) with edge in Natural Hickory NZ (L)

<b>TABLE TOP FINISH - MELAMINE FACED CHIPBOARD (MFC)</b>										
<b>NU (8)</b>	<b>NA (X)</b>	<b>NB (U)</b>	<b>NC (9)</b>	<b>NH (3)</b>	<b>NJ (2)</b>	<b>NL (0)</b>	<b>NT (R)</b>	<b>NV (W)</b>	<b>NP (J)</b>	<b>NZ (L)</b>
8G	XG	UG	9G	3G	2G	0G	RG	WG	JG	LG
84	X4	U4	94	34	24	04	R4	W4	J4	L4
8P	XP	UP	9P	3P	2P	0P	RP	WP	JP	LP
8I	XI	UI	9I	3I	2I	0I	RI	WI	JI	LI
8K	XK	UK	9K	3K	2K	0K	RK	WK	JK	LK
8E	XE	UE	9E	3E	2E	0E	RE	WE	JE	LE
85										
86										
87										
<b>NU</b>										
8X	<b>NA</b>									
8U		<b>NB</b>								
89			<b>NC</b>							
83				<b>NH</b>						
82					<b>NJ</b>					
80						<b>NL</b>				
8R							<b>NT</b>			
8W								<b>NV</b>		
8J									<b>NP</b>	
8L										<b>NZ</b>

## 5. Technical regulations, certificates and quality marks (for selected product configurations)

Remodex.